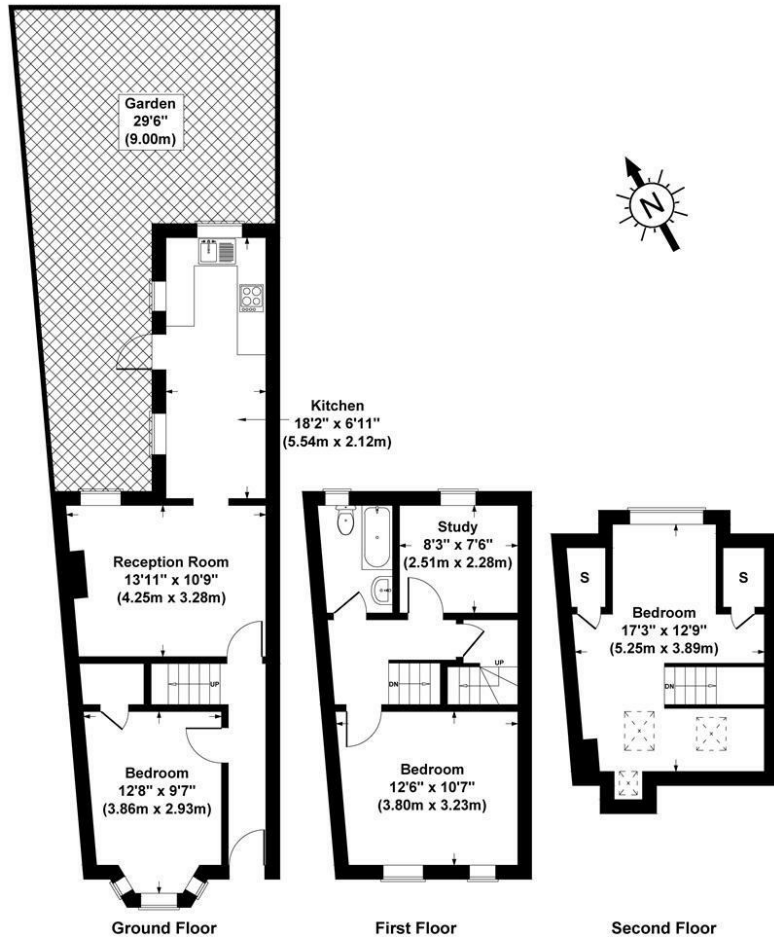


PER MONTH

**£2,500 Per Month**  
**Bradley Road**

London, N22 7SZ

EPC RATING: COUNCIL TAX BAND:



**Bradley Road, London, N22**  
 Gross Internal Area 1001 sq ft / 93 sq metres  
 Not to Scale. Produced by The Plan Portal 2023  
 For Illustrative Purposes Only.



Energy Efficiency Rating		Current	Potential
Very energy efficient - lower running costs			
(92 plus)	<b>A</b>		
(81-91)	<b>B</b>		
(69-80)	<b>C</b>		
(55-68)	<b>D</b>		
(39-54)	<b>E</b>		
(21-38)	<b>F</b>		
(1-20)	<b>G</b>		
Not energy efficient - higher running costs			
<b>England &amp; Wales</b>		EU Directive 2002/91/EC	



Agents Note: Whilst every care has been taken to prepare these particulars, they are for guidance purposes only. All measurements are approximate and are for general guidance purposes only and whilst every care has been taken to ensure their accuracy, they should not be relied upon and potential buyers/tenants are advised to recheck the measurements



**OFFICE ADDRESS**  
 786-788 Green Lanes  
 London  
 N21 3RE

**OFFICE DETAILS**  
 0208 800 1155  
 management@paul-simon.co.uk